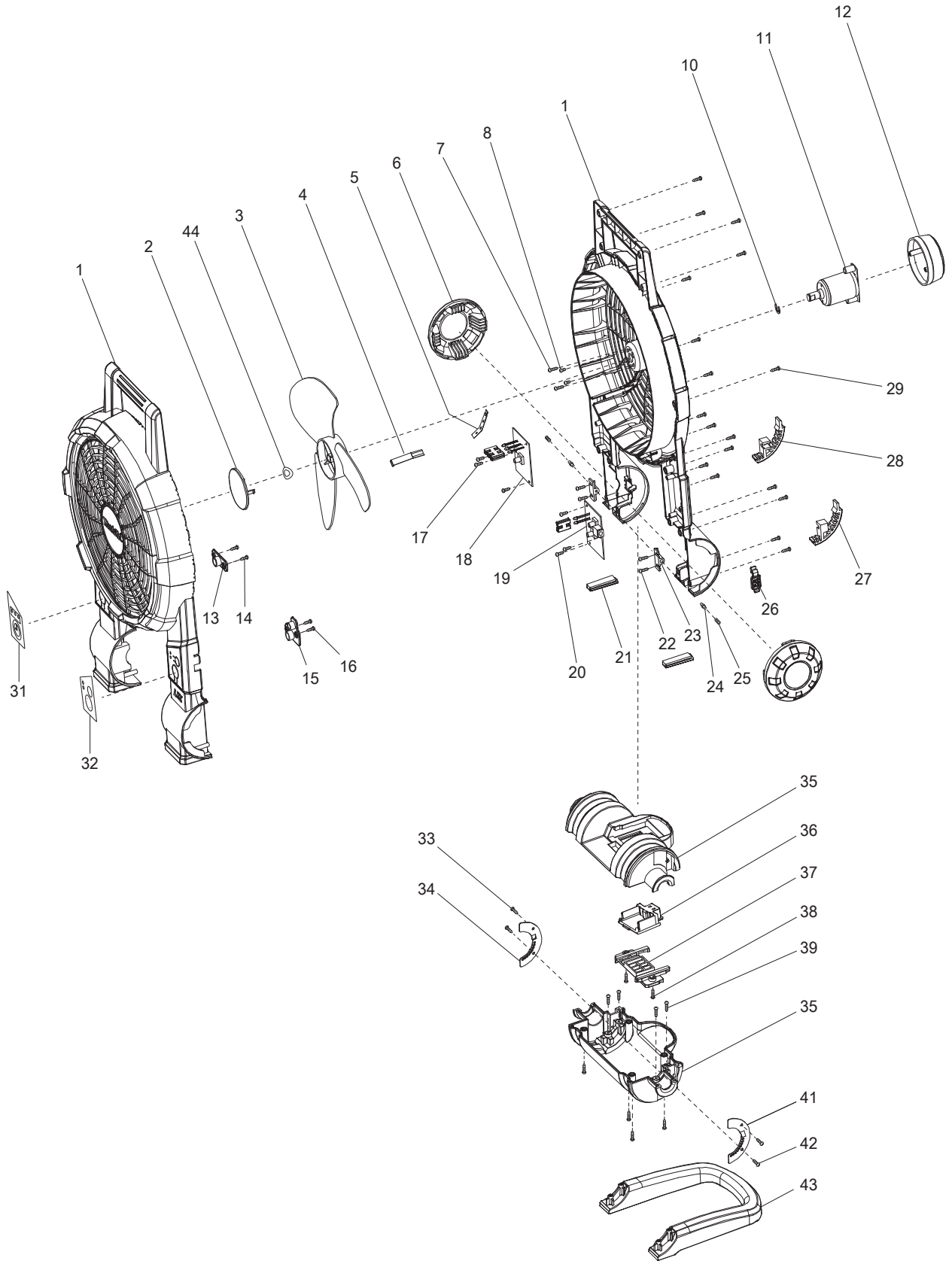




08 - 2016  
DCF201Z  
14.4/18V LXT Jobsite Fan



Item No	Type	Part No	Description	Qty	Unit
001	1	TE00000002	HOUSING SET (BLUE)	1	SET
	2	TE00000166	HOUSING SET (BLUE)	1	SET
002		TE00000003	FAN BLADE COVER	1	PC.
003		TE00000004	FAN BLADE	1	PC.
004		TE00000005	WIRE COVER A	1	PC.
005		TE00000006	WIRE COVER B	1	PC.
006		TE00000007	SIDE COVER	2	PC.
007		TE00000028	TAPPING SCREW M3X14	2	PC.
008		TE00000030	P.H.SCREW M3X5	2	PC.
010		TE00000009	STOP RING	1	PC.
011		TE00000107	MOTER ASSEMBLY	1	PC.
012		TE00000011	MOTOR COVER	1	PC.
013	2	TE00000013	BUTTON PROTECTOR L	1	PC.
014		TE00000029	TAPPING SCREW M3X10	2	PC.
015	2	TE00000012	BUTTON PROTECTOR R	1	PC.
016		TE00000029	TAPPING SCREW M3X10	2	PC.
017		TE00000029	TAPPING SCREW M3X10	3	PC.
018		TE00000042	TIME PCB BOARD	1	PC.
019		TE00000043	SWITCH PCB BOARD	1	PC.
020		TE00000029	TAPPING SCREW M3X10	3	PC.
021		TE00000016	FRONT FOOT	2	PC.
022		TE00000028	TAPPING SCREW M3X14	4	PC.
023		TE00000017	SPRING HOLDER	2	PC.
024		TE00000008	STEP PIN 3-4.5	2	PC.
025		TE00000027	COMPRESSION SPRING 2.2	2	PC.
026		TE00000018	ADAPTER SOCKET CAP	1	PC.
027		TE00000019	REAR FOOT L	1	PC.
028		TE00000020	REAR FOOT R	1	PC.
029		TE00000028	TAPPING SCREW M3X14	1	PC.
031		TE00000032	SWITCH LABEL L	1	PC.
032		TE00000033	SWITCH LABEL R	1	PC.
033		TE00000029	TAPPING SCREW M3X10	2	PC.
034		TE00000025	CLUTCH PLATE R	1	PC.
035		TE00000021	BASE SET	1	SET
036	1	TE00000022	TERMINAL	1	PC.
	2	TE00000247	TERMINAL	1	PC.
037		TE00000023	TERMINAL HOLDER	1	PC.
038		TE00000028	TAPPING SCREW M3X14	2	PC.
039		TE00000028	TAPPING SCREW M3X14	8	PC.
041		TE00000024	CLUTCH PLATE L	1	PC.
042		TE00000029	TAPPING SCREW M3X10	2	PC.
043		TE00000026	STAND	1	PC.
044		TE00000040	WAVE WASHER	1	PC.
C01		TE00000044	CARTON F/DCF201	1	PC.

#### **ACCESSORIES**

A01		TEB0000002	AC ADAPTER	1	PC.
A02		-----	14.4V, 18V LI-ION BATTERY		
A03		-----	BATTERY CHARGER		